

RAWMENERS



*Mikasa*

Make a lasting impression.



Multiquip has built a reputation by offering the lowest maintenance, most innovative and productive rammers in the business.

## With all the features you need:

- 1 Engine Options** – Available with either Honda GX100 or Subaru ER12.
- 2 Multi-Functional Lever with Detent** – Controls throttle, fuel supply and shut-off.
- 3 Anti-vibration Handle Design** – Dramatically reduces operator fatigue and increases productivity.
- 4 Diaphragm Carburetor** – Eliminates fuel leakage if rammer is laid on its side.
- 5 Convenient Rollers** – Facilitates easy loading into truck beds.
- 6 Protective Guards** – Heavy duty PVC prevents damage to key components.
- 7 Lower Handle** – Allows for easier lifting of the equipment.
- 8 Laminated Wood and Steel Shoe** – Absorbs and withstands shock and stress.
- 9 Cyclonic Air Filtration System** – Captures 98% of environmental particles to lengthen maintenance intervals and component life
- 10 Digital Gauge:**
  - Hourmeter- measures usage for gauging service intervals.
  - Tachometer- engine RPM's displayed for optimum performance and easy troubleshooting.



**MTX70**

**Weight lbs (kg)- 165 (75)**

**Shoe Width in (mm) - 11.2 (285)**

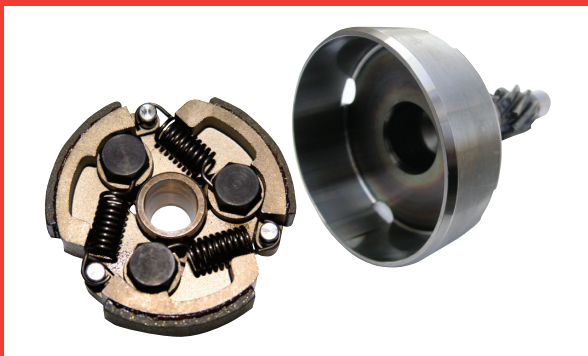
**Impact Force lbs (kN)- 3,350 (14.9)**

## Superior Details:



### Cyclone Filter System

Cyclonic Air Filtration is a 3 stage system that captures 98% of environmental particles.



### Cam-type Clutch

ensures optimum contact between the composite shoes and the drum to eliminate slippage and prolong service life.





**MTX60**

**Weight lbs (kg)** - 141 (64)  
**Shoe Width in (mm)** - 10.4 (265)  
**Engine Options** - Honda GX100 and Subaru ER12  
**Impact Force lbs (kN)** - 3,064 (13.6)



**MTX80**

**Weight lbs (kg)** - 181 (82)  
**Shoe Width in (mm)** - 11.2 (285)  
**Engine Option** - Subaru ER12  
**Impact Force lbs (kN)** - 3,505 (15.6)

MTX Series rammers  
 powered by



**MTR40SF**

- Ideal for landscapers, electrical and plumbing contractors
- Designed specifically for narrow trench work

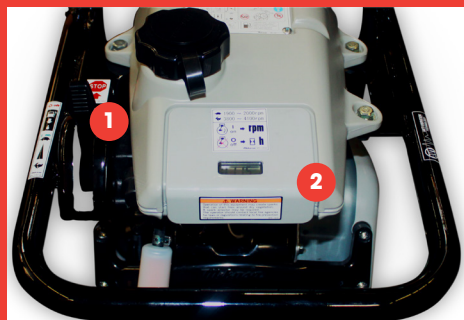
**Weight lbs (kg)** - 101 (46)  
**Shoe Width in (mm)** - 5.9 (150)  
**Engine Option** - Subaru EH09  
**Impact Force lbs (kN)** - 1,215 (5.4)

### Available on MTX models



**Anti-vibration Handle** Dramatically reduces operator fatigue and increases productivity.

### Superior Details:



#### Operator Controls:

- 1 **Multi-Function lever with detent** controls throttle, start/stop and fuel shut-off.
- 2 **Hourmeter** allows accurate tracking of hours and maintenance intervals. **Tachometer** displays engine RPM while in operation.



# Rammers

## Specifications

All features and specifications are subject to change without notice.

Model	MTR40SF	MTX60HD	MTX60SD	MTX70HD	MTX70SD	MTX80SD
Impact Force lbs (kN)	1,215 (5.4)	3,064 (13.6)	3,064 (13.6)	3,350 (14.9)	3,350 (14.9)	3,505 (15.6)
Shoe Jump Height in. (mm)	2.2 (55)	3.1 (80)	3.1 (80)	3.1 (80)	3.1 (80)	3.1 (80)
Blows Per Minute	695	Up to 695	Up to 695	Up to 690	Up to 690	Up to 678
Travel Speed ft./min (m/min)	30 (9)	55.8 (17)	55.8 (17)	55.8 (17)	55.8 (17)	49.2 (15)
Engine Make/Model	Subaru EH09	Honda GX100	Subaru ER12	Honda GX100	Subaru ER12	Subaru ER12
Engine Power HP (kw)*	2.4 (1.8)	2.8 (2.1)	3.5 (2.6)	2.8 (2.1)	3.5 (2.6)	3.5 (2.6)
Engine RPM	4,100	4,100	4,100	4,100	4,100	4,100
Fuel Tank Capacity qt. (L)	2.1 (2)	2.5(2)	2.5(2)	2.5 (2)	2.5 (2)	2.5 (2)
Start Method	Recoil	Recoil	Recoil	Recoil	Recoil	Recoil
Overall Length in. (mm)	24.5 (623)	28.1 (713)	28.1 (713)	31.0 (788)	31.0 (788)	31.0 (788)
Overall Width in. (mm)	13.8 (350)	13.8 (350)	13.8 (350)	13.8 (350)	13.8 (350)	14.4 (365)
Overall Height in. (mm)	43.7 (1109)	38.8 (985)	38.8 (985)	39.4 (1000)	39.4 (1000)	39.4 (1000)
Shoe Width in. (mm)	5.9 (150)	10.4 (265)	10.4 (265)	11.2 (285)	11.2 (285)	11.2 (285)
Shoe Length in. (mm)	10.6 (270)	13.4 (340)	13.4 (340)	13.4 (340)	13.4 (340)	13.4 (340)
Operating Weight lbs. (kg)	101 (46)	141 (64)	141 (64)	165 (75)	165 (75)	181 (82)

\*Engine power ratings are calculated by the individual engine manufacturer and the rating method may vary among engine manufacturers. Multiquip Inc. and its subsidiary companies makes no claim, representation or warranty as to the power rating of the engine on this equipment and disclaims any responsibility or liability of any kind whatsoever with respect to the accuracy of the engine power rating. Users are advised to consult the engine manufacturer's owners manual and its website for specific information regarding the engine power rating.

## Optional Foot Assemblies - For Narrow Trenches

Model	Shoe Width	MTR40SF	MTX60	MTX70	MTX80	MTX90
355XA	4"	✓				
460XA	4.5"		✓			
485XA	4.5"			✓	✓	✓
660X	6.5"		✓			
685XA	6.5"			✓	✓	✓



6.5" W  
XA = All steel



6.5" W  
X = Steel and wood

**WARRANTY:** Rammers - 1 year parts and service. Honda GX100 engine - 3 years. Subaru ER12 engine - 3 years. Please consult engine manufacturers for warranty details and updates.

Your Multiquip dealer is:



Connect with us



[multiquip.com](http://multiquip.com)

© Multiquip Inc.